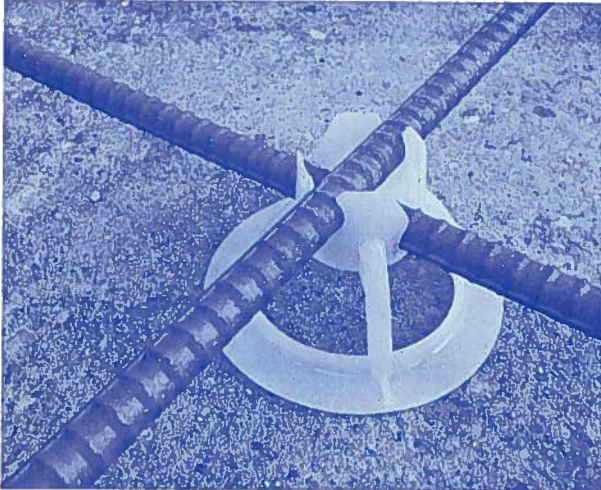


RB-1

**Rebar-ups**, the new all plastic "chair", is easily and quickly attached to the rebar without ties and, above all, reduces labor. The big advantage to the **Rebar-ups** is the upper "can or cylinder", which allows the concrete to bind to rebar at the intersection.



# Rebar-ups®

A NOVEL SUPPORT  
THAT KEEPS  
REINFORCING RODS  
WHERE THEY BELONG  
– IN THE SLAB!

The plastic support chair (**Rebar-ups**) that helps to solve the problems of concrete slabs at grade will:

1. Aid in getting the rebar off the ground.
2. Help support the rebar above the membrane before and during placing of concrete.
3. Snaps easily, quickly and firmly to rebar where the bars intersect; therefore, they do not rotate or fall off. See new design.
4. Resist being pressed into sub-service because of large base ring. Reduces membrane puncture.
5. Reduces supervision and requires no wire tie-off at intersection of rebar.

## INEXPENSIVE REBAR-UPS ARE AVAILABLE IN THREE (3) SIZES:

- 2 inch Rebar-ups .... (4 inch to 5 inch slab)
  - 3 inch Rebar-ups .... (5 inch to 6 inch slab)
  - 4 inch Rebar-ups .... (6 inch to 8 inch slab)
- (Designed to receive #3, #4 and #5 rebar)



**THE SNAP ON PLASTIC SUPPORT THAT HELPS SOLVE THE PROBLEMS  
OF CONCRETE SLABS AT GRADE**

## HINTS

### Plastic Chairs

Rebar-ups are plastic and when placed properly on rebar can produce excellent results with little effort.

### Rebar-ups are Easily Applied

It should be explained to the mechanics that placing the chairs correctly is important.

Rebar-ups are attached where rebar intersect so they will not rotate or fall off.

The lower slot in the Rebar-ups is to receive the lower bar at the intersection. This seems minor, but it should be pointed out so that units will be applied properly the first time.

### Placing of Units

When applying the units, we have found it most convenient to lay a few out to get the idea of positioning. Apply the units and then work away from these units.

### Concrete Placement

Stand outside of wet concrete and pull mix towards you.

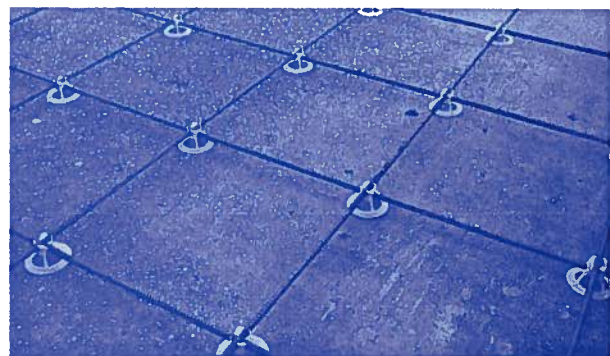
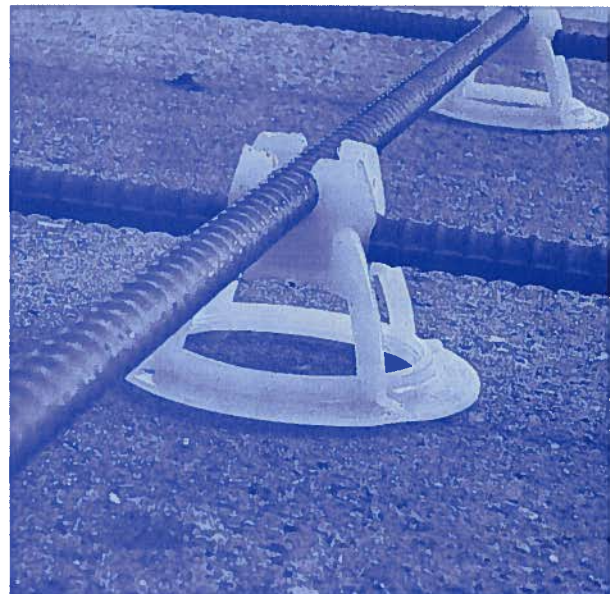
### Stay Positioned

The Rebar-ups normally stay positioned very well. Occasionally, in a well traveled area, the base ring may move from under the axis of the rebar. If this happens, simply lift the rebar and position the base ring properly.

Installation not recommended at sub-freezing temperature.

## SUGGESTED REBAR-UPS SPACING

The spacing of Rebar-up chairs is dependent on the size of the rebar and the amount of deflection allowed after placement. If construction traffic is intense at a given area, simply add a Rebar-up at a crossing or at a single rebar. The pictures shown are with #5 rebar on 26 inch centers, or 1 per 4 sq. ft.



## LOTEL

9348 South Choctaw Drive, 70815 • P.O. Box 14147 • Baton Rouge, Louisiana 70898  
(225) 926-7327/927-9550 • FAX (225) 612-2699 • 1-800-535-8375  
[www.rebarups.com](http://www.rebarups.com) or [www.meshups.com](http://www.meshups.com)

# POSITIONS THE REBAR AND KEEPS IT THERE